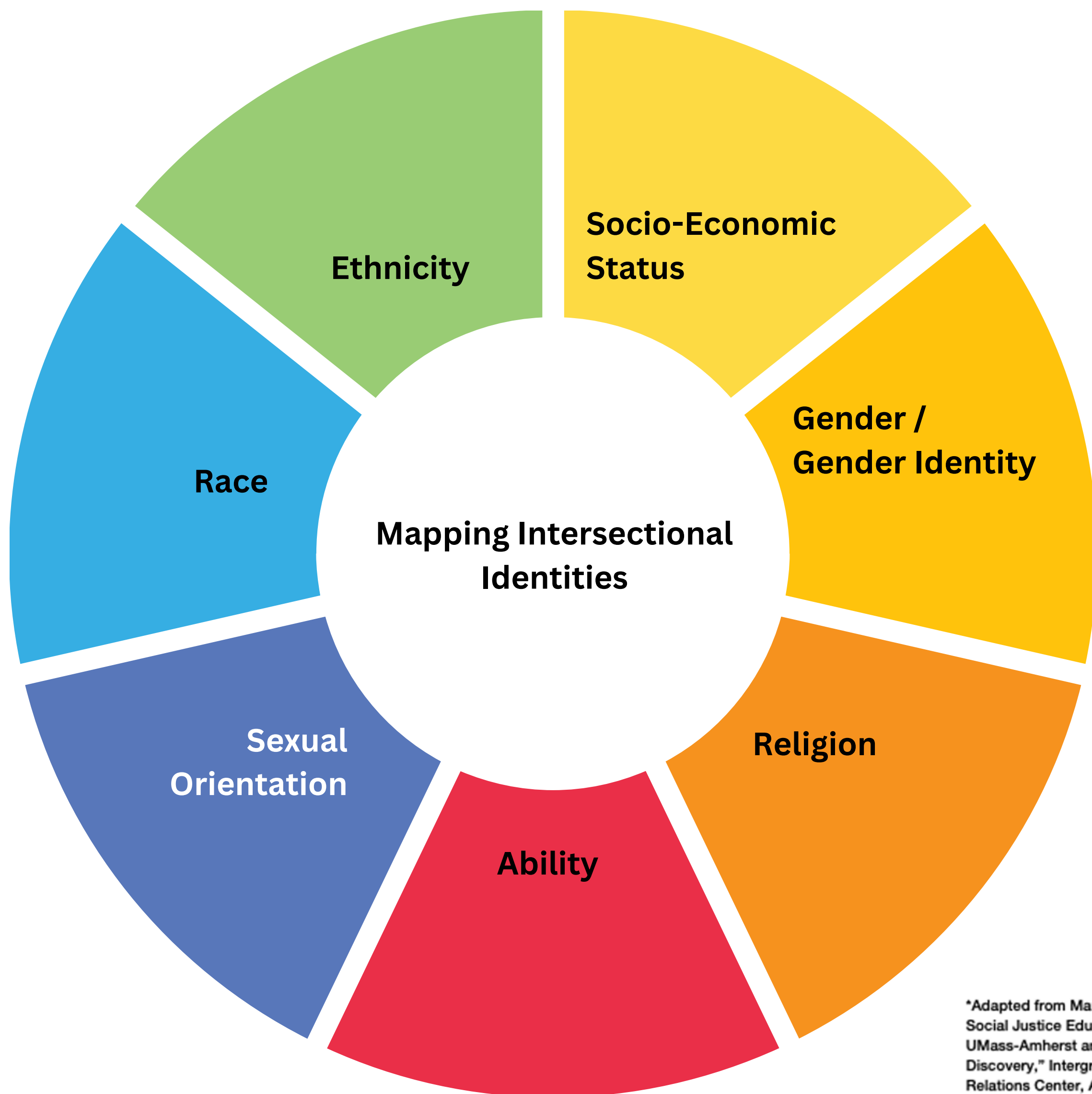


Mapping Intersectional Identities

Intersectional identities: Recognizing that an individual's identity consists of multiple, intersecting factors, including but not limited to gender identity, gender expression, race, ethnicity, class (past and present), religious beliefs, sexual identity and sexual expression.

These intersecting factors are what make us multi-layered individuals, as one aspect of our identities influences the other aspects of our identities to paint the full picture of who we are and how we are received by the world.

Take a moment to think about yours and fill out the chart below.



*Adapted from Marcella Runell,
Social Justice Education
UMass-Amherst and "Voice of
Discovery," Intergroup
Relations Center, Arizona State
University

Reflection Questions:

- What identities do you think about most often?
- What identities do you think about less often?
- Your own identities that you would like to learn more about.
- Identities that have the strongest effect on how you perceive yourself.
- Identities that have the greatest effect on how others perceive you.

